



NHUF

"Expect Excellence"

Principal: Kelly Mason

SCHOOL NEWS

Phone: 610-754-9580

www.boyertownasd.org

JANUARY 2012

CALENDAR OF EVENTS

Tuesday, January 10
Wednesday, January 11

Saturday, January 14
Monday, January 16
Thursday, January 19
Tuesday, January 24

School Board Meeting, Ed Center 7 PM
Parent Preview Night Growth & Development
Junior High West 7 PM
PTCA Bowling 12 Noon
NO SCHOOL
PTCA Meeting 7 PM
School Board Meeting, Junior High East 7 PM



GOOD BYE

Please let me take this opportunity to say good bye to all the students and families that have gone through NHUF while I have worked here for the past 35 years. It has been my pleasure to get to know many wonderful families. It is a joy to see the second generation of some of the former students attending and even teaching at NHUF. I know that I will miss all the interaction with the students, some of whom I have known since they were infants, but anticipate spending more time with my family after my retirement.

Thank you for all the great years at NHUF.

Sincerely,
Sandra H. Yarnall

STUDENT DROP OFF REMINDERS

Students who are driven to school are to be dropped off at the gym entrance (not the visitor's entrance) between 8:25 and 8:40 AM. Please make sure that you are dropping off your child to school no earlier than 8:25 AM since there are no adults available to supervise students. The building will be open for students at 8:25 AM. This will help ensure the safety of all of our students. Thank you for your anticipated cooperation.

CUSTODY INFORMATION

Please contact the office if there are changes to your child's custody that restricts one biological parent's access to school records or to the child during school hours. Any change in custody arrangements requires an updated district custody form and a copy of the court order that supports it.

IMPORTANT DIRECT DIAL PHONE NUMBERS

HEALTH ROOM/NURSE – 610-473-1770
CAFETERIA MANAGER/LUNCH ACCOUNTS – 610-473-1760
GUIDANCE COUNSELOR – 610-473-1790
LIBRARY – 610-473-1750



All direct dial numbers and email addresses for teachers and staff may be accessed on the school district's website under New Hanover Upper Frederick Elementary School, Staff Directory.

THE LATEST FROM THE LIBRARY – MRS. CORCORAN

Good news! The schools in the Boyertown Area School District now subscribe to CultureGrams. This online database is a wonderful resource for all kinds of information about the countries of the world.

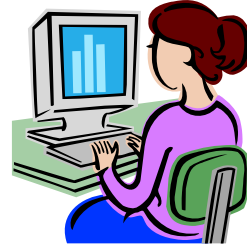
Students may access the electronic resources below from the Destiny Library Home page. Directions for home access are listed below.

CultureGrams

Log on to: <http://online.culturegrams.com>

User name: nhufes

Password: welcome



World Book Online Reference Center

Log on to: <http://www.worldbookonline.com>

ID: boyertownaskids

Password: basdbearsrock

POWER Library


(Pennsylvania Online World of Electronic Resources)

Go to a public library's website, link to POWER Library, and enter your public library card number.

Here is the link to Boyertown Community Library:

<http://www.berks.lib.pa.us/boyertowncl/>

SCHOOL CLOSINGS DUE TO WEATHER CONDITIONS

- 
1. Several months remain when it might become necessary to have a delayed opening, an early dismissal, or no school due to bad weather conditions. The following reminders are given for those times when snow or other hazardous conditions close school for a day or part of a day. The following television and radio stations are notified and broadcast school district emergency closing and dismissal information:

ALLENTOWN: WAEB-AM (790), WAEB-FM (104), WKAP-AM (1470), WZZO-FM (95.1), WCTO-FM (96), WLEV-FM (100.7), WEST-AM (1400), WODE-FM (99.9), WWYY-FM (107.1)

WFMZ-TV (CHANNEL 69)

READING: WEEU-AM (830), WIOV-AM (1240), WIOV-FM (105.1), WRAW-AM (1340), WRFY-FM (102.5)

PHILADELPHIA: KYW-AM (1060) – District #893, WCAU-TV (CHANNEL 10), WPVI-TV (CHANNEL 6), CBS-TV (CHANNEL 3)

POTTSTOWN: WPAZ-AM (1370)

Any delay or closing affecting New Hanover Upper Frederick Elementary School will be announced as **BOYERTOWN AREA SCHOOL DISTRICT** except on KYW-AM. KYW will announce #893.

2. When hazardous conditions develop during the day and early dismissal is announced, elementary students will be dismissed as the buses arrive at the school after they have taken the secondary students home. The times will vary depending on road conditions.
3. Parents are urged to make provisions for their children in preparation for early dismissal due to hazardous conditions.
4. Students should not be brought to school on days when a late start is in effect until fifteen minutes prior to the start of school. Please be sure of the starting time before leaving the children at school.
5. Kindergarten schedules for when school times are changed due to weather conditions are as follows:

ONE HOUR DELAY – Regular dismissal time for AM Kindergarten.



Regular schedule for PM Kindergarten.
TWO HOUR DELAY – 10:45 AM to 12:45 PM for AM Kindergarten.
Regular schedule for PM Kindergarten.
EARLY DISMISSAL – Schedule for AM Kindergarten will depend upon time of
early dismissal announcement. Session canceled for PM Kindergarten.

SCHOOL BOARD MEETING VOLUNTEERS

A BIG thank you to all of the parents who donated food and munchies for the school board meeting held at NHUF in December. The refreshment table looked wonderful. Thank you again to all who helped out. Special Thanks to Mrs. Rebecca Puleo and Mrs. Karen Vitabile.

FREE AND REDUCED LUNCH

Any parent or guardian who has undergone a recent financial change, which may qualify them for the free or reduced lunch program, should please ask the school for an application.

NEWS FROM THE NURSE – Mrs. Polk

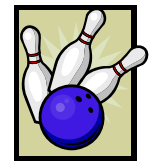
In order to promote the health of school age children, Pennsylvania requires a dental exam in kindergarten and grade 3 and for any student with incomplete health records. Notices have been sent out if your child has not yet returned a completed dental form to school. You may choose to have it performed by your family dentist or the school dentist. The holiday school break is an ideal time to visit your child's dentist without interrupting the classroom time. Although your family dentist can best evaluate your child's dental health, the school dentist will be available if desired. You are welcome to attend the school exam. The dental exams this year are scheduled for January 25, 2012. Please return the form as quickly as possible so that we are aware of your exam choice and can make necessary arrangements.

MARKET DAY NEWS

We'd like to welcome new and returning Market Day supporters! Start the year off right with a FREE Eat Well Guide with any Market Day purchase! The Eat Well Guide is a 36 page, full-color guide with over 35 delicious recipes, easy serving suggestions and healthy eating tips! When you think of January what do you think of? Relaxing from the holiday stress and maybe having a Superbowl party? Market Day has some products to make this year's Superbowl party the best ever! The Li'l Bagel dogs and Mozzarella sticks are a great way to start your party off right. Why not finish off the party with Italian Style Meatballs and Popcorn Chicken? Please look for your January order guide to come home soon or visit marketday.com to order today and to learn more. If you have any questions contact David or Michelle Hanson at 215-234-0506 or jnhanson@comcast.net. See you at the sale.

HUF-PTCA News:

NHUF PTCA BOWLING DAY is January 14, 2012. We have reserved 30 lanes this year. For more info call Linda Walker- 610-327-0239 or email lwalker@maplehill.org. **YEARBOOK** order forms will be coming home in January with your children! The cost of the yearbooks remains \$10, and all orders are due back to school by **January 31**. Please make checks payable to NHUF PTCA. All yearbooks must be ordered at this time as we do not order extras that can be purchased at the end of the year. Every year we have parents looking to purchase yearbooks on the last day of school, and unfortunately, we will not have extras available at that time. If you have any questions please feel free



to contact the yearbook chairs: Dianna Schell at diannaken@comcast.net or Michelle Weller at mweller@boyertownasd.org



Each Thursday we have a **PRESCHOOL STORYTIME** for our incoming kindergarten students from 1:30 – 2:00 p.m. Boys and girls hear a story and do a small craft. They are then able to check out two library books per week. Coming to story time helps to acclimate students to the "big school" for the following year. Story time is held in a kindergarten classroom which allows the students to become even more familiar with their upcoming surroundings. If you have any questions or would like to volunteer to read to students, please contact Becky Puleo at rebacm@comcast.net or 610-323-1043.

Movie Night – Mark your calendars for February 3, 2012 for Family Movie Night. This year's movie will be "Smurfs". Please contact Jenn Cavalari for further information at bjcavalari@comcast.net or 610-716-1723.



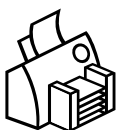
BASKET RAFFLE is coming sooner than you think. Mark your calendars for April 13, 2012.

Membership

You can still sign up for **MEMBERSHIP** with the PTCA. All donations, regardless of size, are funneled directly back to the classrooms to purchase supplies for your students. Membership envelopes can be requested from Linda Walker at lwalker@maplehill.org or can be picked up from the school office.

Did you know that the PTCA . . . ???

- Sponsors the Fall Festival, Ice Cream Social, Bowling Day, and Movie Night!
- Sponsors program such as Seed Project, RHYME books, Yearbook, and the student published books.
- Organizes & runs projects such as the Coin Drive, Holiday Shoppe, Basket Raffle and Race For Education.
- Provided classroom furniture, rugs, and library funding to the school this year.



Are you familiar with all the collection programs that help the school?

It Pays to Recycle! Each year the PTCA collects and recycles used cell phones and print cartridges to make improvements to our **PLAYGROUND**. We are asking that anyone who has used phones or print cartridges to send them to school with your child to be dropped off in the lobby for the bus drop off. The boxes are clearly marked so that children can easily deposit them as they head to their classrooms each day. Additionally, please note that any inkjet, DeskJet, or LaserJet cartridge is acceptable. Toner drums, unfortunately, cannot be used for this program. We appreciate your help.



If you or your business would like to provide donations for us, we'll gladly provide a collection box for you. Please contact Elise Watts at ekswatts@comcast.net.

Campbell's – Labels for Education

This year we are going all out! Last month you received a Bonus Sheet



that offers us 50 Bonus points for each COMPLETED golden sheet we hand in by December 31, 2011. **Please read the instructions carefully!** General collection sheets for 1-point and 5-point labels will be coming home shortly, if not there already. Go to the website <http://www.labelsforeducation.com/> and wait for the screen to show the promotion about winning a **\$45,000** worth of electronics for our school. You have to register the first time you enter but only have to enter your email address each time after that. A simple easy way to WIN for NHUF!



Now you are able to order **GIANT GIFT CARDS** and have them brought home with your child or available for pick-up at our bi-monthly PTCA meetings. There are additional slips on the PTCA bulletin board just outside the nurse's office at school. Additionally, you can now link your **GIANT** savings card to a savings account for the NHUF PTCA. Why not help your school by linking our school to the purchases you already make for your family. To do this, go to www.giantfoodstores.com; choose "savings" and then "A+ School Rewards". Then, click on the "register" button and use school code number 05997 and either New Hanover Upper Frederick or Upper Frederick Elementary school.

Redner's Save-A-Tape

Please be sure to use your Save-A-Tape / Gas savings card at check out and send your receipts into school on a regular basis! There is a marked collection container in the main office.

Target – Take Charge of Education Program

We received a check for **\$488** for last year's effort. I encourage you to use your Target card for **ALL** of your holiday shopping done at the store. We receive up to 1% back for every purchase.

Link your Target credit or debit card to NHUF PTCA account – our school ID # 88992. You can do this online or over the phone at 1-800-316-6142.

GIANT BONUS CARD

If you are a Giant shopper and have a Giant bonus card, you can link your bonus card to one or two schools. For every purchase that you make you are earning money for our school. Here is more information about the program.

How can I support my school?

After signing up for the BONUSCARD, customers can support local school(s) (up to two) to benefit from the A+ School Rewards Program by going to www.giantfoodstores.com/aplus and choosing the "Designate" link from the menu on this page or by calling the A+ School Rewards Hotline at 1-888-GIVING-2 (1-888-448-4642).

What happens if you support more than one school?

Customers can support up to two (2) schools to benefit from the program. A+ School Rewards are divided equally among each school. To ensure all schools receive proper A+ School Rewards credit when selecting multiple schools, include each school's ID code. Just remember that each time you enroll your BONUSCARD in a program year, you must include ALL schools (up to two) that you want to support, even if you have previously selected them. If you do not include all ID's, the last school enrolled will negate all of your previously enrolled schools.

Do I have to register my card every year?

Yes, you MUST register your card every year. In order to perform critical maintenance applications to our A+ database, all of the information in our system is cleared at the end of the program each year. These updates ensure that the correct school receives your points. This simple effort on the part of each supporter is the only step necessary each year for your school to begin earning their points and CASH through A+ School Rewards!

Why does my receipt only show the points I've earned this month?

At the end of each month, the points you've earned are factored into your school's year-to-date total. Visit [School Totals](#) at the beginning of each month to see your school's updated total.

Why do my points "expire" at the end of the month?

Your receipt displays the total number of points you've earned in a given month. Once points "expire" at the end of the month, they are factored into to your school's year-to-date total. Your points total will restart at zero at the beginning of each month.

