

Boyertown Area School District

Demographics, Enrollment Projections, and Building Utilization Scenarios, Update

Prepared By

Montgomery Educational Consultants, Inc

Agenda

Introduction

Dr. Dana Bedden, Superintendent

Project Overview Project Team

Bill Montgomery
Montgomery Educational Consultants

New Developments

Bill Montgomery

Enrollment Projections

Tim Lambert
Absolute Technology, Inc.

Next Steps

Bill Montgomery and Tim Lambert

Short and Long Term Goals

Team

MEC and ATI Project Team

Montgomery Educational Consultants (MEC)

Bill Montgomery (Primary)

- 44+ years experience in education
- 20 years as a public school Board Member & Delaware County I.U. Board Member

Recent Projects:

- Norristown School District
- Rose Tree Media School District
- Upper Darby School District
- Richmond County School System

Absolute Technology, Inc (ATI)

Tim Lambert (Director of I.T.)

20+ years experience in education

- Enrollment Projections
- Geographic Information Systems
- Long Range Planning Scenarios
- Databases and Application Development

Project Overview

Boyertown Area School District

- 100 square miles, 2 counties, 7 Townships and 3 Boroughs
- 1 High School, 2 Middle Schools, 7 Elementary Schools

Large parcels of land purchased for residential development


- Need for an enrollment projection and demographic study
- District can adequately plan for future student capacity needs
- Recent developments and at least 26 new, current, or planned residential communities

Project Review

Historic student enrollment has shown a slight decline in student population over the past years.

- This enrollment trend reflects the live birth data where there's been an overall decrease in live births within the School District.

New residential development in the area will increase the number of live births and students moving into the School District.

- Single Family Homes : 1,292
 - Multi (SFH or Townhomes) : 1,881
 - Townhomes : 240
- 
- 3,413 Potential New Units

[FIND YOUR HOME](#)[ABOUT US](#)[FAVORITES](#)[RECENT 1](#)[SEARCH](#)

Hanover Pointe

Boyertown School District

SINGLE-FAMILY HOMES • NEW HANOVER, PA

Starting From Low \$290s

[CALL 800-888-8888](#)[GET DIRECTIONS](#)[ADD TO FAVORITES](#)[← SEARCH MORE](#)[GALLERY](#)[OVERVIEW](#)[DETAILS](#)[HOMES](#)[VISIT](#)[OFFERS](#)[CONTACT US](#)[← SEARCH MORE](#)[GALLERY](#)[OVERVIEW](#)[DETAILS](#)[HOMES](#)[VISIT](#)[OFFERS](#)[CONTACT US](#)

WELCOME TO HANOVER POINTE

Your affordable, single-family home in the sought-after Boyertown Area School District awaits! Contact us to learn more.



New Homes in New Hanover, PA

Low prices, low taxes, low payments and the lowest priced single-family homes in the sought-after Boyertown Area School District. From the \$280s.



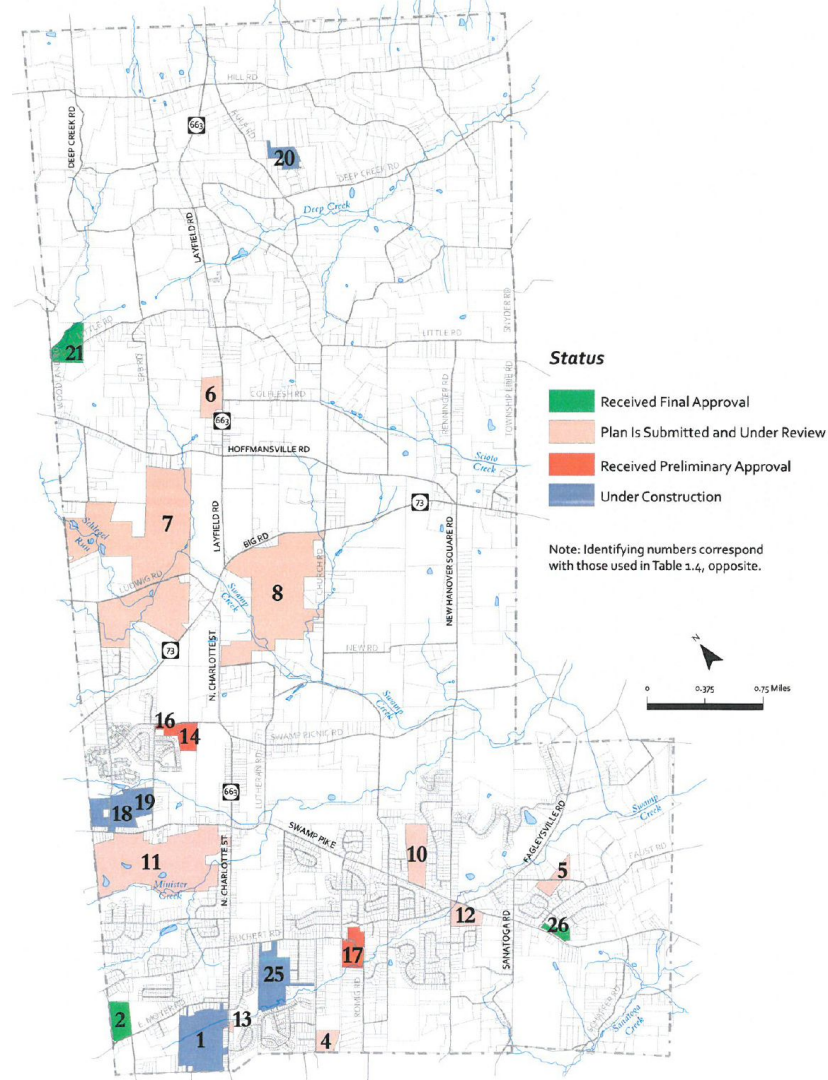
Limited-Time Offer

Final 3 days of unprecedented savings! HURRY in for 2018's biggest savings towards options & closing costs!

New Hanover Land Use Assumptions Report

Table 1.4 | Residential Land Developments – Proposed and Approved, as of May 24, 2018

NUMBER	SUBDIVISION	STATUS	TOTAL UNITS	UNITS BUILT	UNITS LEFT TO BUILD
1	Hanover Pointe	AP	145	27	118
2	Rolling Meadows	AC-F	63	0	63
4	Westwood/Maguire	AC-N	65	0	65
5	Wagner Tract	AC-N	9	0	9
6	FDEV	AC-N	3	0	3
7	Bart Golf	AC-N	135	0	135
8	Marinari Tract	AC-N	871	0	871
10	Hanover Crossing	AC-N	79	0	79
11	New Hanover Town Center	AC-N	875	0	875
12	Farmview Acres	AC-N	15	0	15
13	Brenning Subdivision	AC-N	2	0	2
14	Trotter's Gait	AC-P	29	0	29
16	Pacer's Gait	AC-P	7	0	7
17	2481 Romig Road	AC-P	52	0	52
18	Renninger Tract	AP	115	73	42
19	Country Meadows	AP	32	23	9
20	Erdenheim	AP	12	1	11
21	Mann Tract	AP	8	1	7
25	Woodfield	AP	121	0	121
26	2557 Swamp Pike	AP	5	1	4



New Developments Overview

Washington ES

- Construction: 3
- Planning: 1
- TBD: 3

Colebrookdale ES

- TBD: 1

Boyertown ES

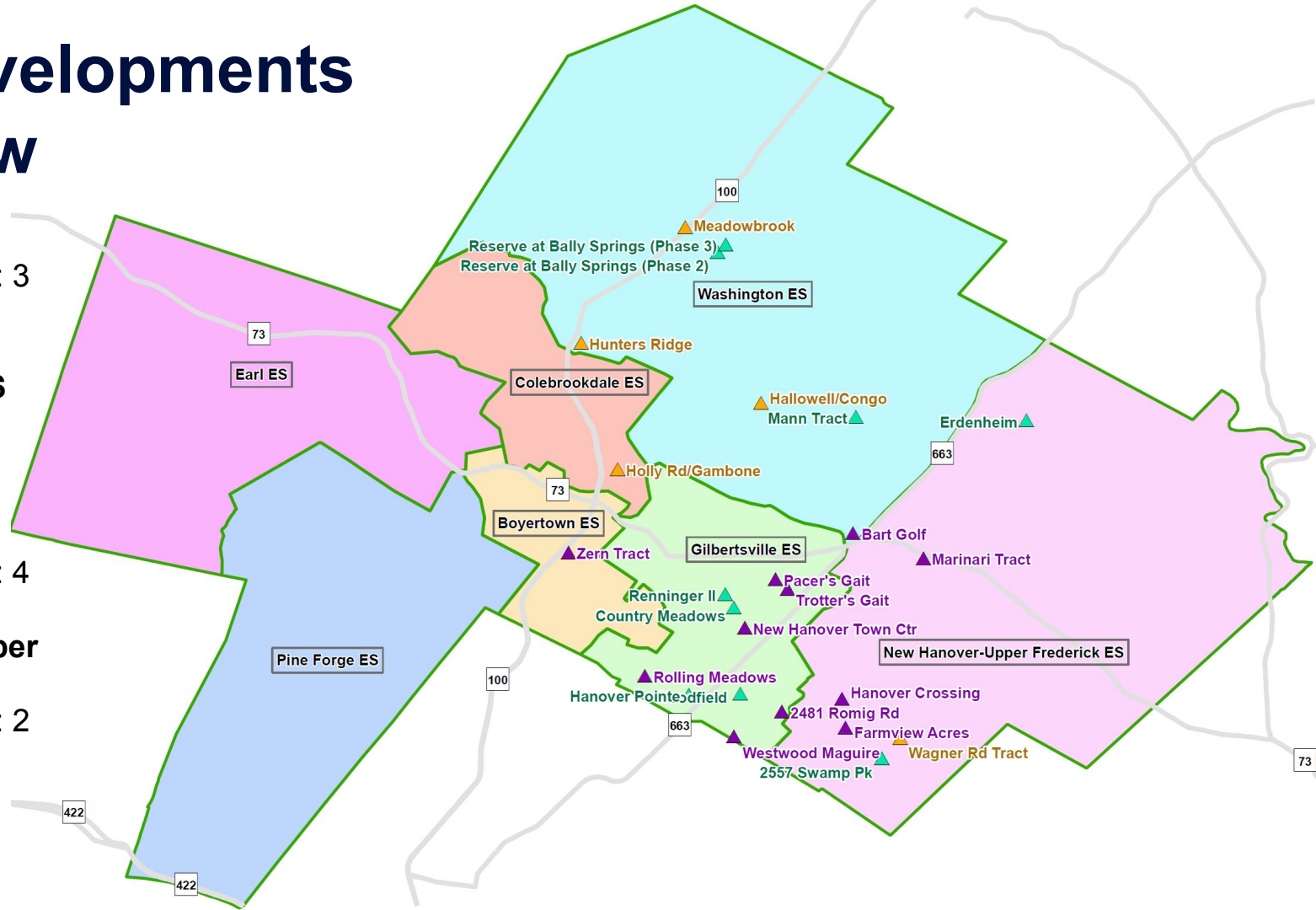
- Planning: 1

Gilbertsville ES

- Construction: 4
- Planning: 6

New Hanover-Upper Frederick ES

- Construction: 2
- Planning: 3
- TBD: 1



New Developments - Gilbertsville ES

Elementary School	Municipality	Development	Type	# Units	Status
Gilbertsville ES	New Hanover	2481 Romig Rd	SFH	52	In Planning
Gilbertsville ES	New Hanover	Country Meadows	SFH	32	In Construction
Gilbertsville ES	New Hanover	Hanover Pointe	SFH	132	In Construction
Gilbertsville ES	New Hanover	New Hanover Town Ctr	Multi	875	In Planning
Gilbertsville ES	New Hanover	Pacer's Gait	SFH	7	In Planning
Gilbertsville ES	New Hanover	Renninger II	SFH	115	In Construction
Gilbertsville ES	New Hanover	Rolling Meadows	SFH	63	In Planning
Gilbertsville ES	New Hanover	Trotter's Gait	SFH	29	In Planning
Gilbertsville ES	New Hanover	Westwood Maguire	SFH	65	In Planning
Gilbertsville ES	New Hanover	Woodfield	SFH	121	In Construction

New Dev - New Hanover-Upper Frederick ES

Elementary School	Municipality	Development	Type	# Units	Status
New Hanover-Upper Frederick ES	New Hanover	2557 Swamp Pk	SFH	5	In Construction
New Hanover-Upper Frederick ES	New Hanover	Erdenheim	SFH	12	In Construction
New Hanover-Upper Frederick ES	New Hanover	Farmview Acres	SFH	16	In Planning
New Hanover-Upper Frederick ES	New Hanover	Hanover Crossing	SFH	79	In Planning
New Hanover-Upper Frederick ES	New Hanover	Marinari Tract	Multi	871	In Planning
New Hanover-Upper Frederick ES	New Hanover	Wagner Rd Tract	SFH	10	Unknown

New Developments - Elementary Schools

Elementary School	Municipality	Development	Type	# Units	Status
Boyertown ES	Douglass/Montco	Zern Tract	TH	240	In Planning
Colebrookdale ES	Douglass/Montco	Holly Rd/Gambone	SFH	204	Unknown
Washington ES	New Hanover	Bart Golf	Multi	135	In Planning
Washington ES	Douglass/Montco	Hallowell/Congo	SFH	92	Unknown
Washington ES	Colebrookdale	Hunters Ridge	TH	60	Unknown
Washington ES	New Hanover	Mann Tract	SFH	8	In Construction
Washington ES	Washington	Meadowbrook	SFH	250	No Final Plan
Washington ES	Washington	Reserve at Bally Springs (Phase 2)	SFH	43	In Construction
Washington ES	Washington	Reserve at Bally Springs (Phase 3)	SFH	38	In Construction

Enrollment Projections Process

Data : Live Births by Municipality (Calendar Year)

Calc : Live Births to School Year (#)

Calc : Live Births to District Enrollment (%)

Calc : Live Births to Elementary School (%)

Baseline Trending - Building Transition

Student Plotting and Calculations (GIS)

K

1

2

3

4

5

6

7

8

9

10

11

12

Baseline Trending - Grade to Grade

Educational Plan Changes

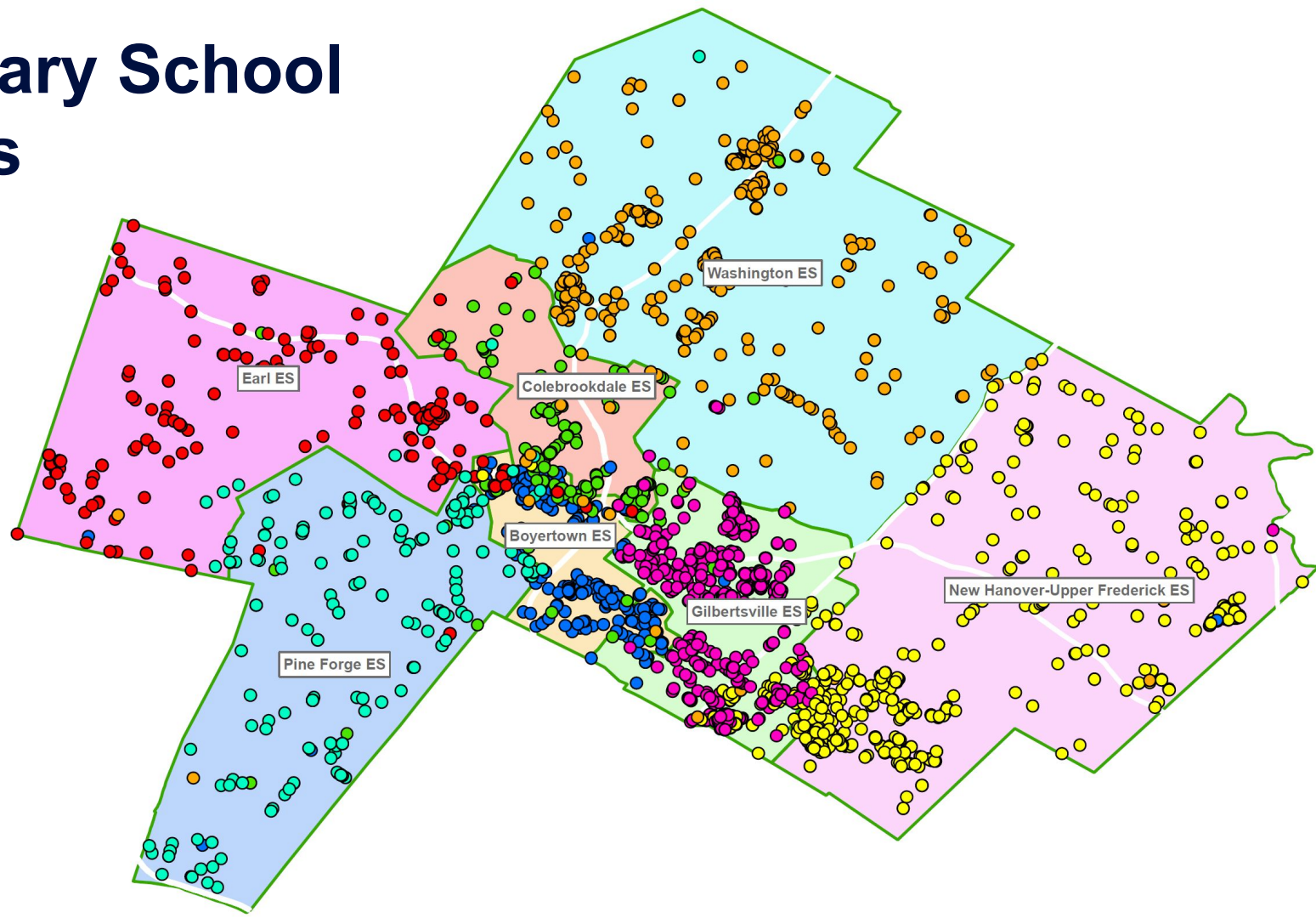
Students In/Out of Catchment

Student Migration

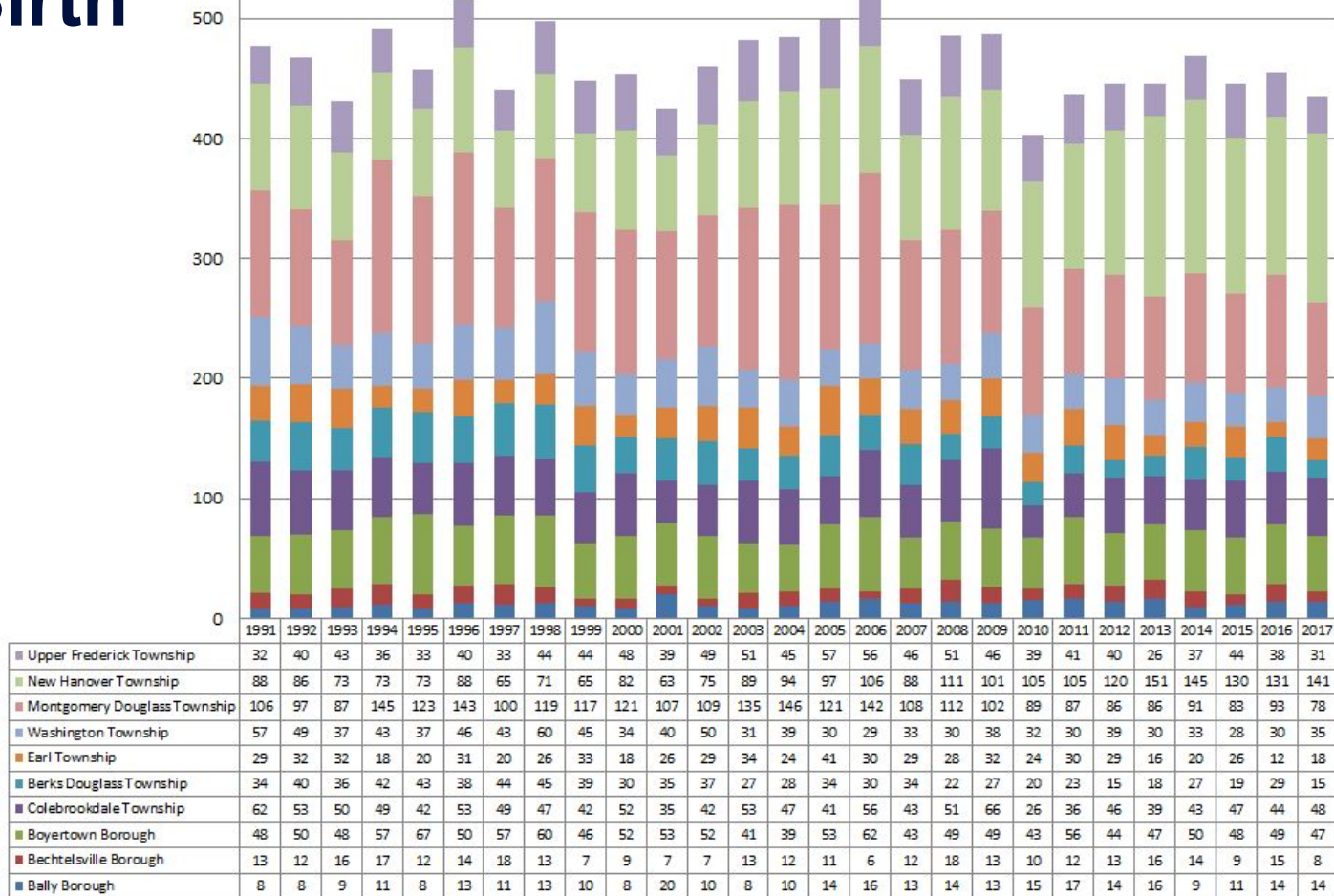
Students / Housing Unit

New Residential Developments

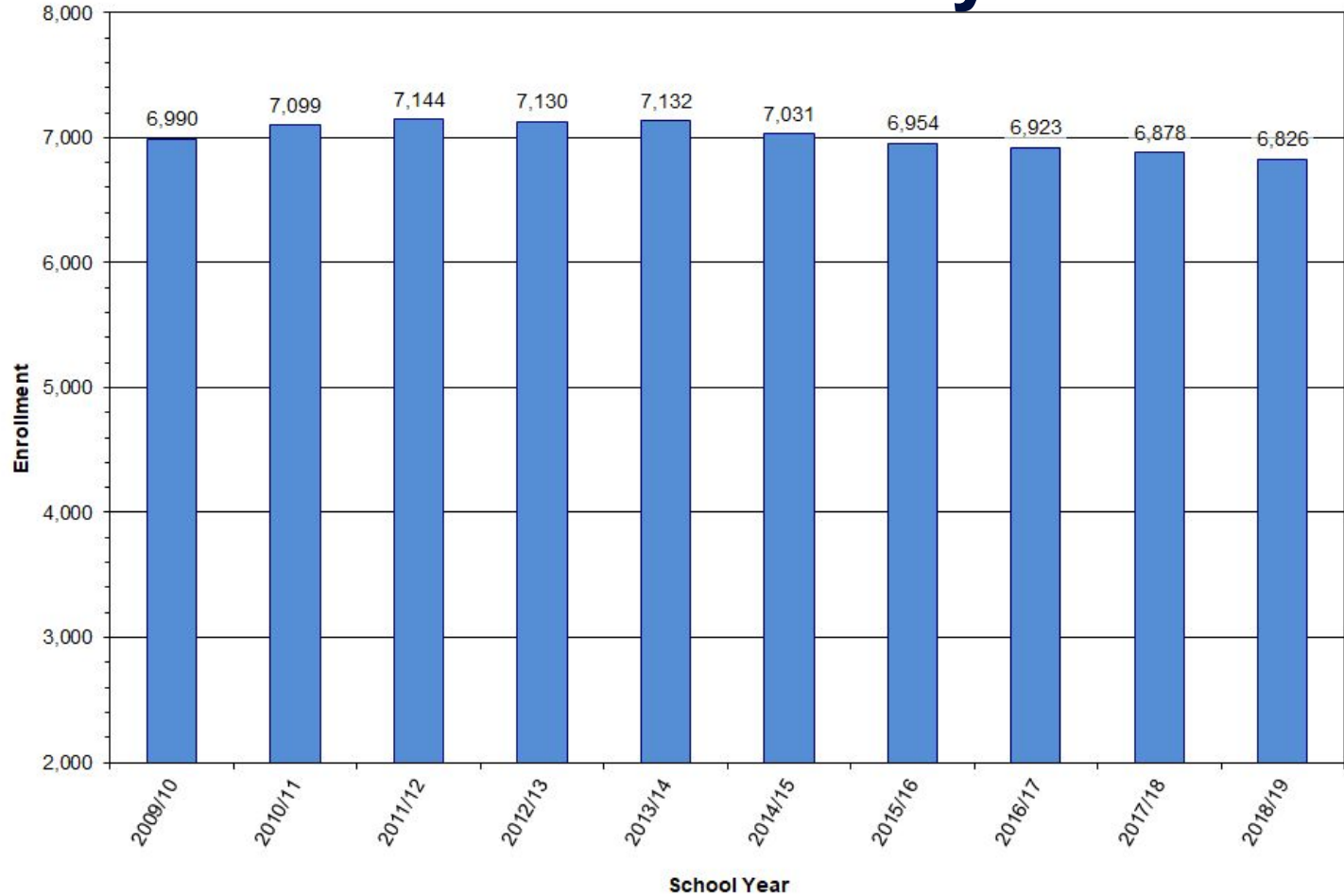
Elementary School Students



Live Birth Rates



Enrollment History



Preliminary Projections*

Year	K	01	02	03	04	05	06	07	08	09	10	11	12	Total
2009/10	495	557	455	530	534	593	516	534	569	563	588	542	514	6,990
2010/11	492	527	566	481	549	551	584	520	546	584	574	583	542	7,099
2011/12	512	527	529	574	494	551	574	594	521	535	588	569	576	7,144
2012/13	482	574	517	545	578	492	548	583	593	536	538	579	565	7,130
2013/14	492	519	568	534	545	590	506	559	591	589	545	518	576	7,132
2014/15	489	525	509	584	537	531	587	519	558	578	582	522	510	7,031
2015/16	423	524	527	518	579	547	535	580	521	547	588	563	502	6,954
2016/17	453	462	527	531	523	575	554	548	578	521	543	546	562	6,923
2017/18	453	484	465	537	546	526	588	559	558	582	531	503	546	6,878
2018/19	454	503	483	480	552	558	538	585	554	568	548	487	516	6,826
2019/20	453	497	514	501	496	561	558	545	587	564	568	513	491	6,848
2020/21	452	500	507	532	510	507	561	560	546	597	564	533	517	6,886
2021/22	451	493	511	521	545	519	507	567	561	556	597	529	537	6,894
2022/23	447	497	496	524	537	553	519	513	568	571	556	562	533	6,876
2023/24	447	490	504	505	535	548	553	525	514	578	571	521	566	6,857
2024/25	446	490	496	512	517	544	548	557	527	524	578	536	525	6,800
2025/26	443	490	495	504	526	525	544	553	558	537	524	543	540	6,782
2026/27	440	485	497	503	515	534	525	549	554	568	537	489	547	6,743
2027/28	439	481	491	505	514	523	534	530	550	564	568	502	493	6,694
2028/29	440	481	485	499	516	522	523	539	531	560	564	533	506	6,699

* Does not account for students from new developments.

New Students Added to Projections

School	10 Year Potential* (approx)
Boyertown ES	35
Colebrookdale ES	40
Earl ES	0
Gilbertsville ES	200
New Hanover-Upper Frederick ES	110
Pine Forge ES	0
Washington ES	100
Boyertown MS-East	225
Boyertown MS-West	35
Boyertown HS	225

* Showing preliminary maximum number of students for all developments. Using existing catchments and feeders.

Next Steps: Project Goals

Short Term

- Balance the Middle Schools
 - Account for enrollment projections
- Remove Grey Areas for the New Year

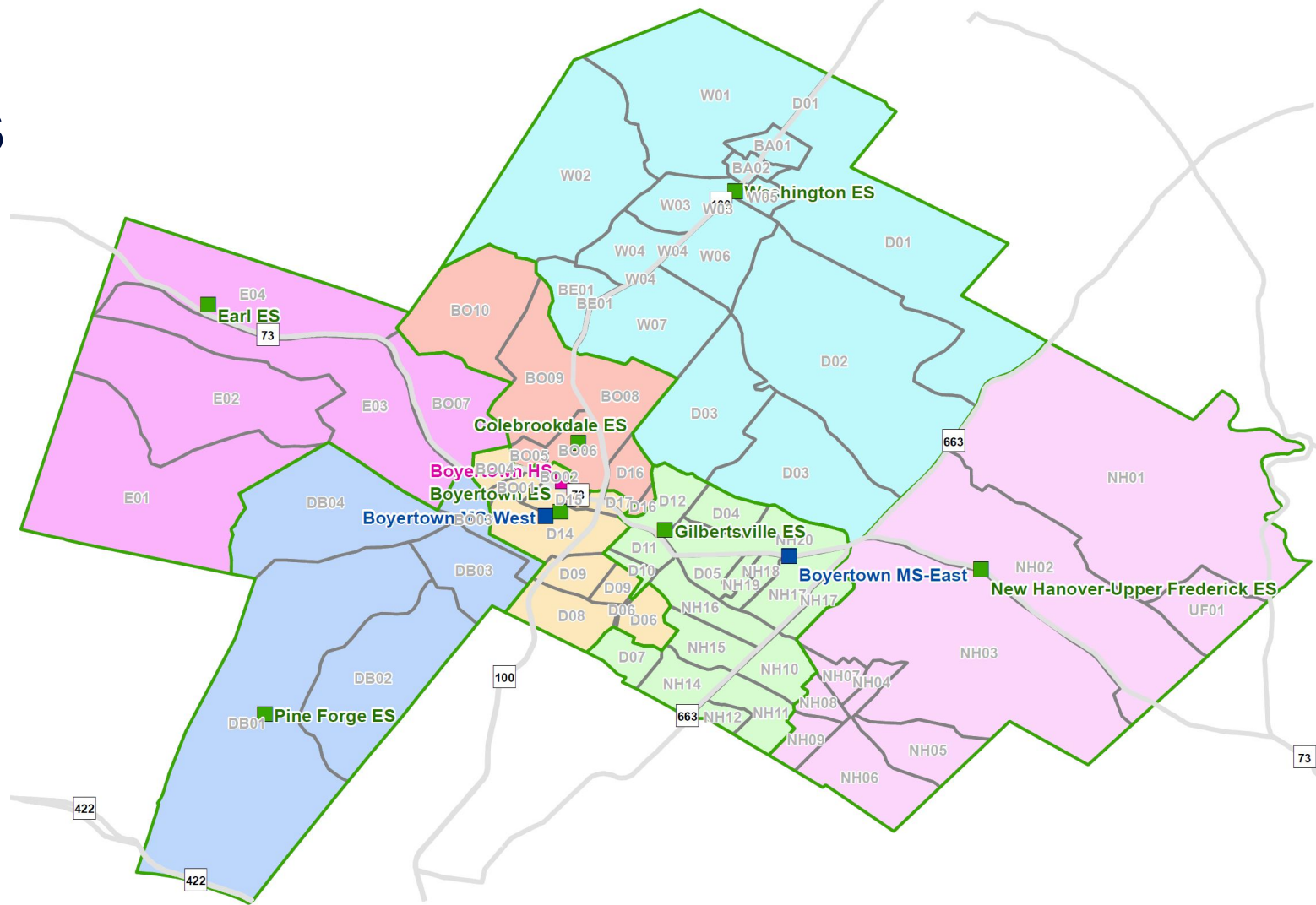
Long Term

- Balanced Elementary Schools
 - Allow for future growth due to new developments
- Ensure Continued Balance of Middle Schools
- Prepare for Increased Enrollment, K-12
- Potential for School to School Feeders

Next Steps: Development Tasks

- Student Analysis
 - Transitions In/Out of District
 - Longevity at Address + Multi-Family
- Adjust Enrollment Projections
 - Account for student analysis and new developments
- Neighborhood Planning Units
 - Logical and Geographic Planning Areas
- Scenarios
 - Variables Identified
 - Scenarios Identified
 - Scenarios Analyzed

NPU's



Questions and Answers